



TEACHWELL PROJECT SEARCH

A special education program that offers a wide range of internship experiences and employment training opportunities.

PROJECT SEARCH

A special education program that offers a wide range of internship experiences and employment training opportunities.

Avera

*Teachwell Project Search is supported by the South Dakota
Department of Human Services, Division of Rehabilitation Services*

SUPPORTED
TRANSITIONS

Project SEARCH at Avera Health prepares students for full-time work.

We facilitate internship opportunities at Avera, empowering students to explore healthcare careers matched to their interests and abilities. Students receive individual support, personalized instruction and job coaching as they participate in three different 10-week internships.



**JULIE
LARGE**

Special Education
Coordinator



**ANGIE
MULDER**

CESP
Project Search
Coordinator and
Special Education
Teacher



**MATT
THOMPSON**

CESP
Success Coach



PROJECT SEARCH

A special education program that offers a wide range of internship experiences and employment training opportunities.

Avera 

Teachwell Project Search is supported by the South Dakota Department of Human Services, Division of Rehabilitation Services

SUPPORTED
TRANSITIONS



Project | SEARCH®

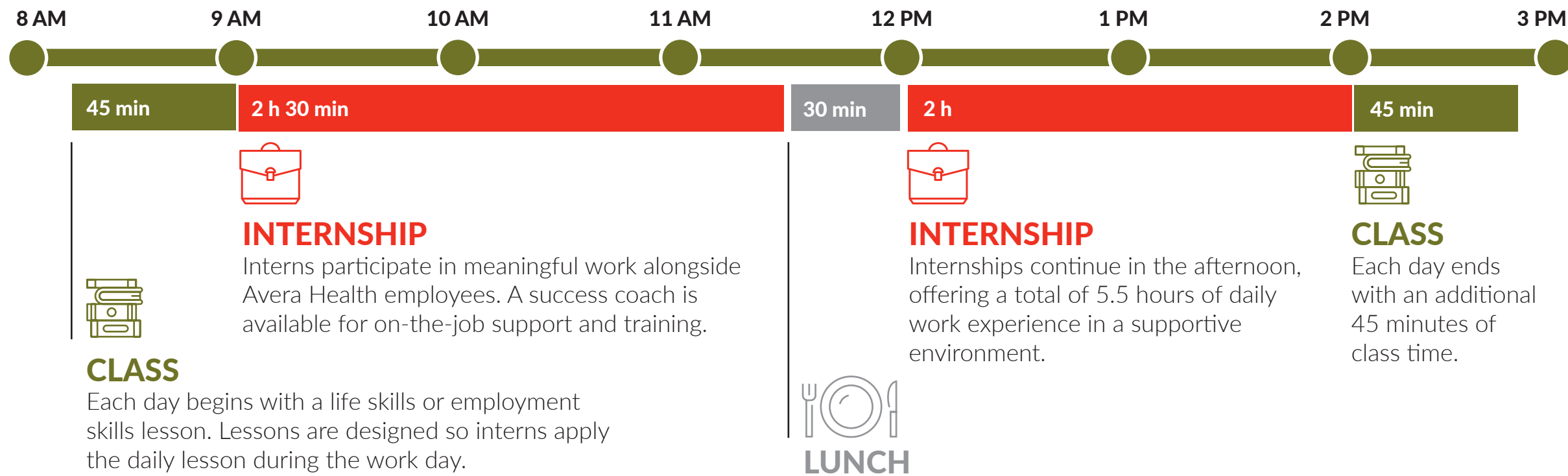
Project SEARCH is a unique, business-led employment training program that takes place entirely at the workplace.

Project SEARCH is offered worldwide. Teachwell Solutions, Avera Health, and the local Vocational Rehabilitation office have worked together since 2009 to offer Project SEARCH to Sioux Falls area students.

PROJECT SEARCH DAILY SCHEDULE

SPENDING EACH DAY BUILDING TRANSFERABLE EMPLOYMENT SKILLS

Project SEARCH at Avera Health offers students access to dozens of different internship opportunities. Each year provides students the choice to explore 3 different healthcare careers in internship rotations lasting about 10 weeks. Teachwell special education teachers and success coaches provide individual support and instruction to help students build skills that lead to competitive employment.



PROJECT SEARCH ENROLLMENT

SERVING YOUNG ADULTS

Project SEARCH at Avera Health is a special education program for students aged 18 to 21 whose IEP goals include supported transition services. Teachwell works closely with other community support organizations, including Vocational Rehabilitation (VR) agencies.

A 9-MONTH SCHOOL YEAR

Project SEARCH at Avera Health follows a traditional school calendar. Each year begins in August and ends in May. The school year is 176 days. Students enroll for a full school year. In most cases, young adults complete Project SEARCH in the final year of supported transition services.

APPLICATION PROCESS

To be considered for Project SEARCH, each student visits Avera Health prior to completing an application. Students are interviewed by a selection committee and interns are chosen the spring each year. Once accepted, a meeting is held to discuss the student's IEP.

LOCATED AT AVERA HEALTH

Local school districts provide transportation to and from Project SEARCH at Avera Health. The program is hosted at the Avera Health campus in Central Sioux Falls. Teachwell staff will provide transportation during school hours.

CONTACT US



**JULIE
LARGE**

Special Education
Coordinator

Want to learn more?

Our special education coordinators will discuss options, explain programming and identify support services. Teachwell hosts open house events and offers facility tours for educators, students and families.

PHONE NUMBER

605-367-7680

EMAIL

julie.large@teachwell.org

ADDRESS

Teachwell Solutions
715 E 14th St.
Sioux Falls, SD 57104



Teachwell Project SEARCH is a special education program offered by Teachwell Solutions, a non-profit education co-op created by South Dakota public schools. We specialize in alternative education, special education programming, education-related therapy and supported transition services. Visit us online at teachwell.org.